

SMD Metal Core

Our SMD Metal Core brand name is CPI Core.
 It made of the soft-magnetic metal alloy powder.
 Their heights and diameters can be individually adjusted according to your requirements.

SMD Metal Core Advantage

Excellent DC bias characteristic

Ferrite Contrast 250% High

High heat resistance

Ferrite Contrast High

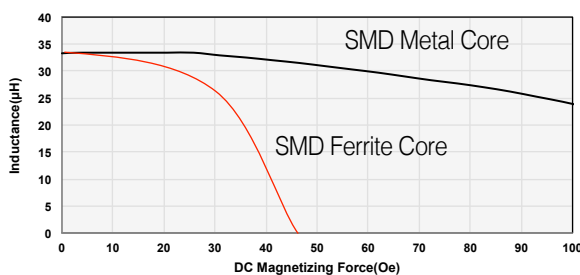
Low profile enhancements

Component Size : Ferrite 8040 ▶ Metal 656515

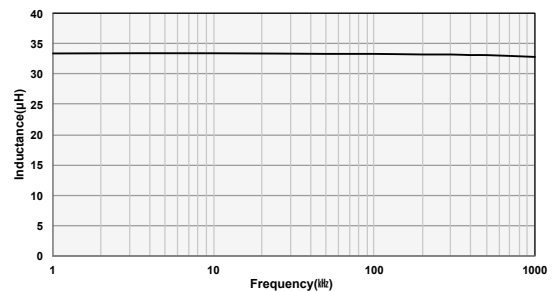
Provide a differentiated quality

- High performance
- Free inductance (after winding)
- High efficiency
- Customized
- Available in high current
- Ultra slim(>0.8mm)

Inductance vs. DC Bias Curves

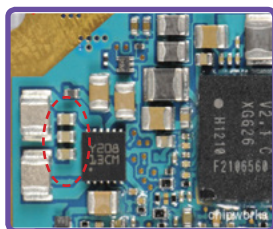


Inductance vs. Frequency



Application

Mobile, Tablet, Display, OLED, Etc Portable Devices



Smart phone



LCD TV



Tablet